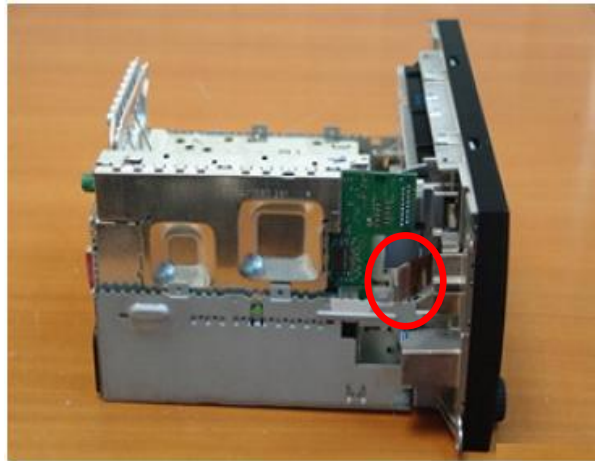


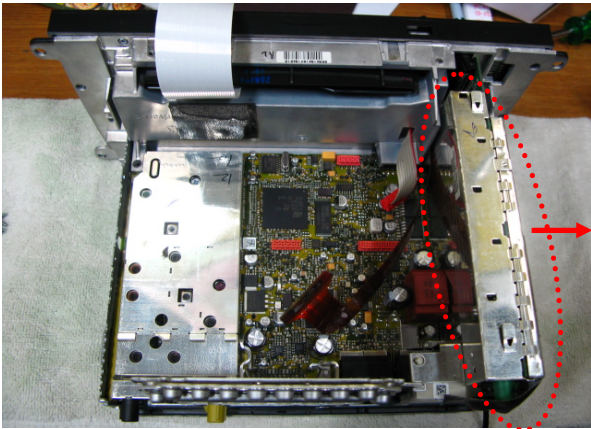
Installation Guide for Porche Cayenne 05~07



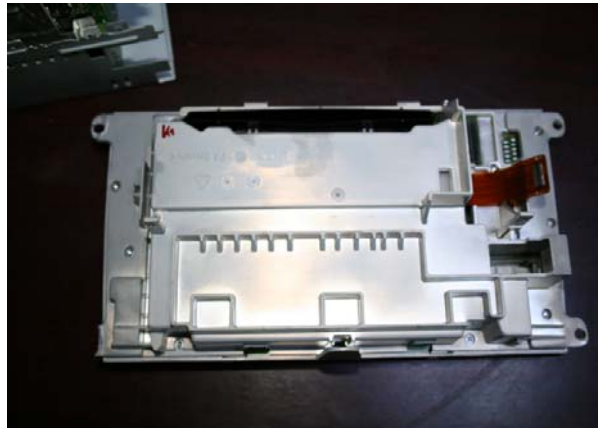
Step 1 : Take apart the screws marked with the tools.



Step 2 : Unplug the marked cable from the monitor



Step 3 : Separate the marked board like the above picture.



Step 3 : Separate the marked board like the above picture.



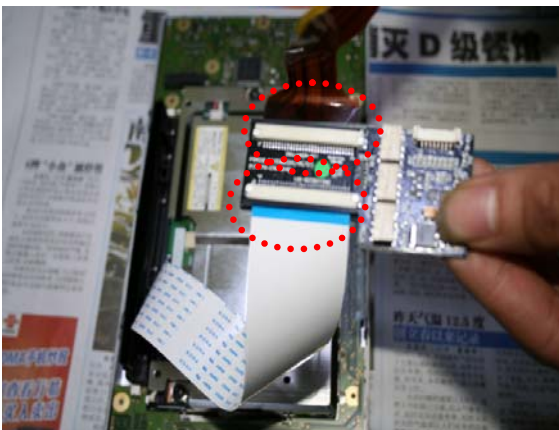
Step 4 : Take apart the white plastic board.



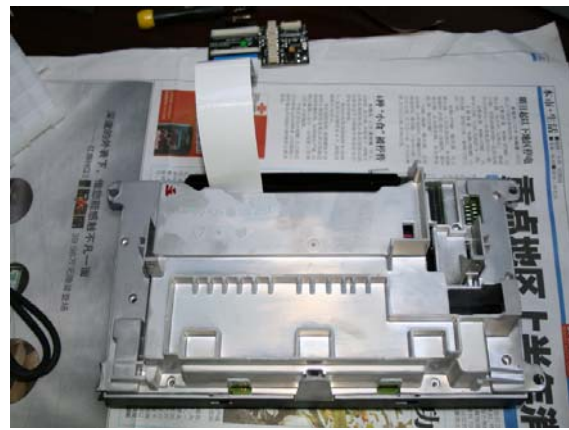
Step 5 : Unplug the brown FPC cable



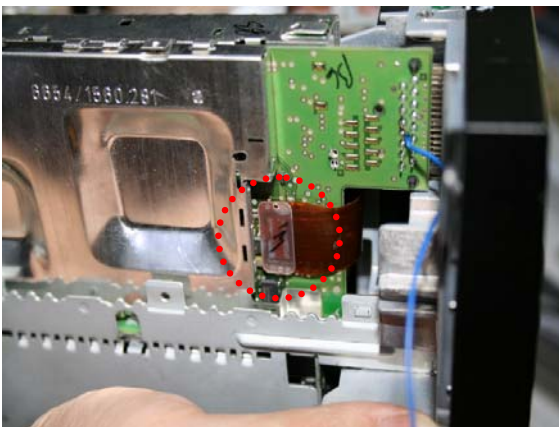
Step 6 : Connect the offered FFC cable to the connect where the brown FFC cable is connected.



Step 7 : Connect each opposite side of FFC, Brown cable to the daughter board like the above picture.

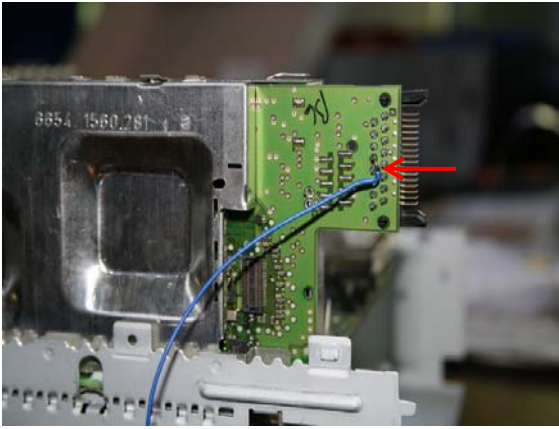


Step 8 : Assemble the silver steel case back

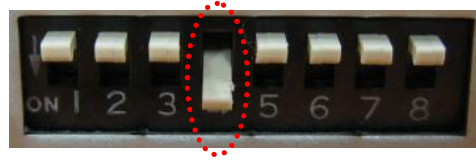


Step 9 : Plug the brown cable back into the original position.

To use Navi button



* Connect Orange wire (Navi) of offered Mode cable to indicated point like the picture (Pin 4 from upside)



* Caution

When you use this function, you have to put the Dip S/W No.4 down of the RGB converter like the picture.

(For Cayenne : Dip S/W No.4 (On)

For W211, W164EU : Dip S/W No.4 (OFF)

* This function is only available from RGB converter Rev.3

(Updated date 10.Mar.2008)